

FOR SALE OR LEASE

1415 L'Orient Street | Saint Paul, Minnesota

SPECIALTY FREEZER/COOLER COMPONENTS

PROPOSALS DUE NOVEMBER 15



SPACE DETAILS

- 81,355 Total Sq. Ft.
- 7,190 Sq. Ft. Office Space
- 63,825 Sq. Ft. Warehouse Space
- 10,320 Sq. Ft. Mezzanine Space

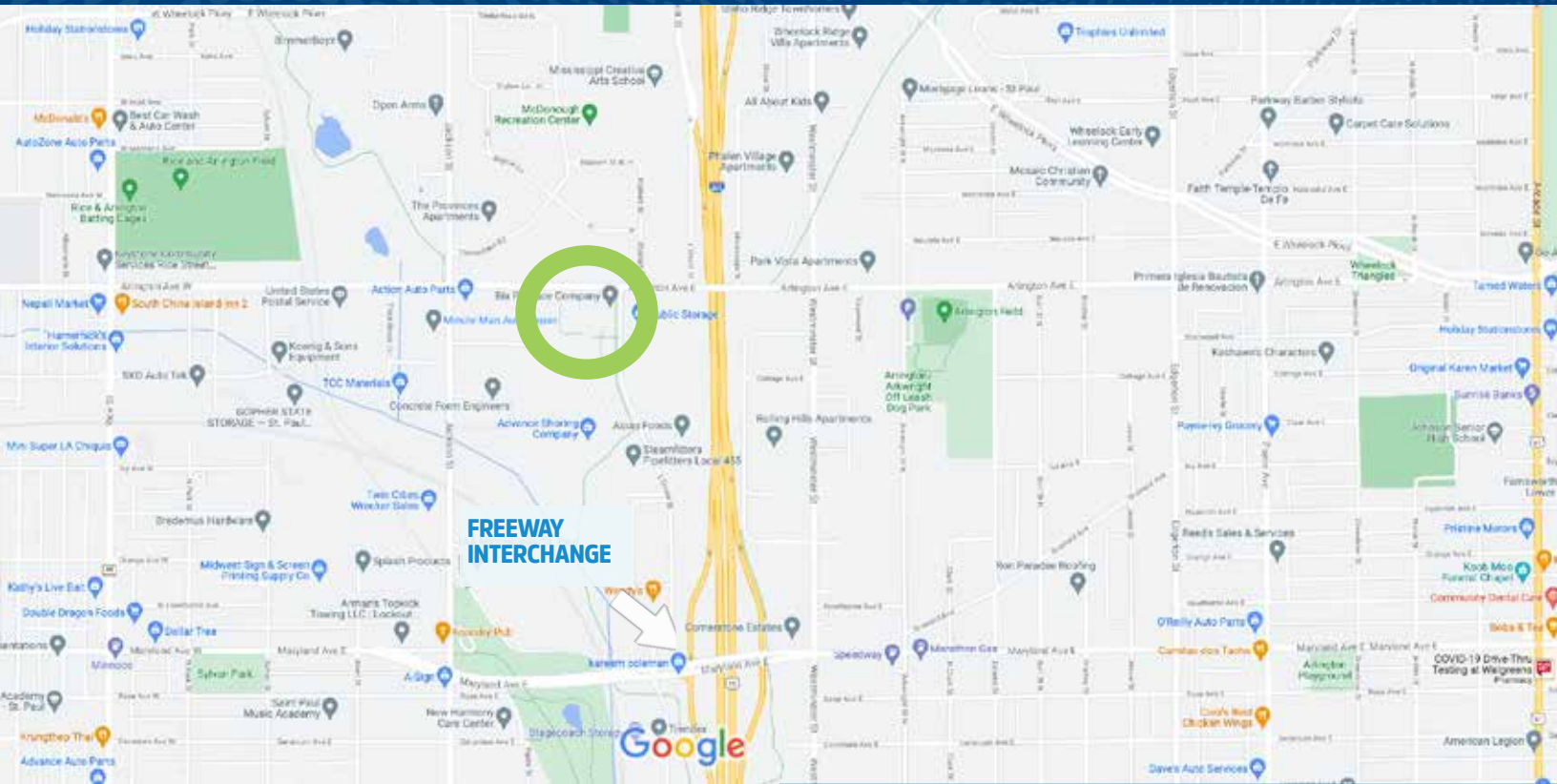
- 5 Acres
- 153 Employee Parking Spaces
- 17 Dock Doors

PROPERTY HIGHLIGHTS

- Property Zoning: I-1 Light Industrial
- PID #: 192922420018, Lot 1
- Located at Full-Service Freeway Interchange in Urban Core
- Local Labor Pool Available
- Easy Access to 35E from Maryland Ave.
- 28' Ceilings in Some Areas
- 2020 Real Estate Taxes: Tax exempt
- 2019 Real Estate Taxes: \$169,696

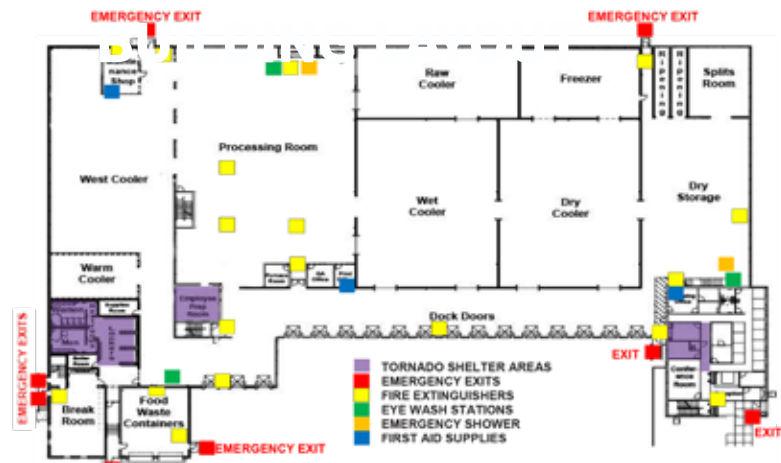


1415 L'Orient Street
Saint Paul, Minnesota



SALES CRITERIA

In addition to a competitive sales price, buyers must also commit to a series of sales criteria set forth by the Saint Paul Port Authority. These include goals around job growth, living wages, and diversity and inclusion plans. Scan QR Code below for details.



CONTACT US

Lee Krueger
President

ljk@sppa.com
651.204.6226

Kathryn Sarnecki
Senior Vice President

ks@sppa.com
651.204.6221